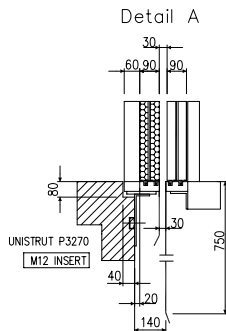
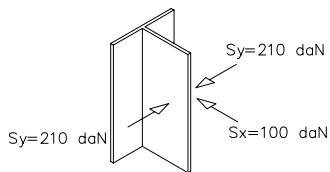
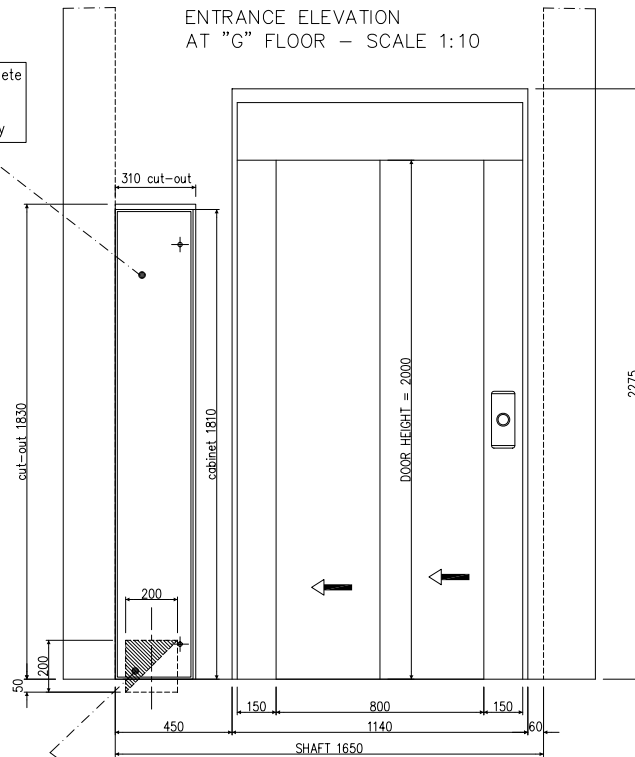


* FREE SPACE FOR MAINTENANCE
 Δ THE CAR ROOF SHALL HAVE AT ONE POINT
 A CLEAR AREA FOR STANDING OF AT LEAST 0.12 m²,
 IN WHCH THE LESSER DIMENSION IS AT LEAST 0.25 m.

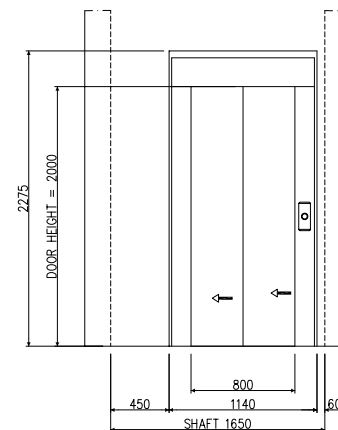


Control panel complete
with the door panel
Handpump and
Electrical Emergency

ENTRANCE ELEVATION
AT "G" FLOOR – SCALE 1:10



ENTRANCE ELEVATION
AT OTHERS FLOORS – SCALE 1:20

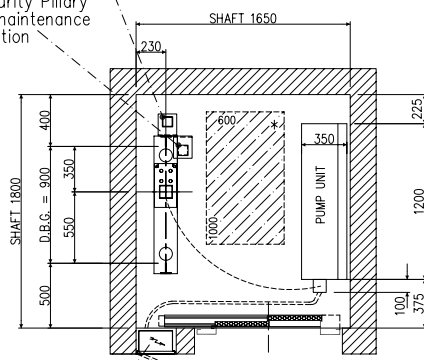


CUT-OUT TO BE CARRIED OUT IN THE WALL TO
ALLOW PASSAGE OF CONTROLLER WIRES

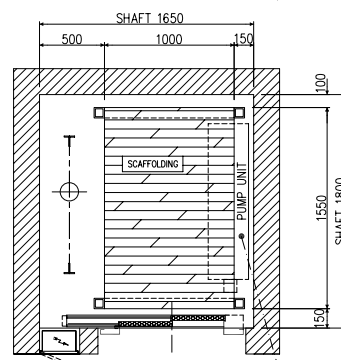
Security Pillary
in normal use
position

Security Pillary
in maintenance
position

PIT SECTION Sc.1/20



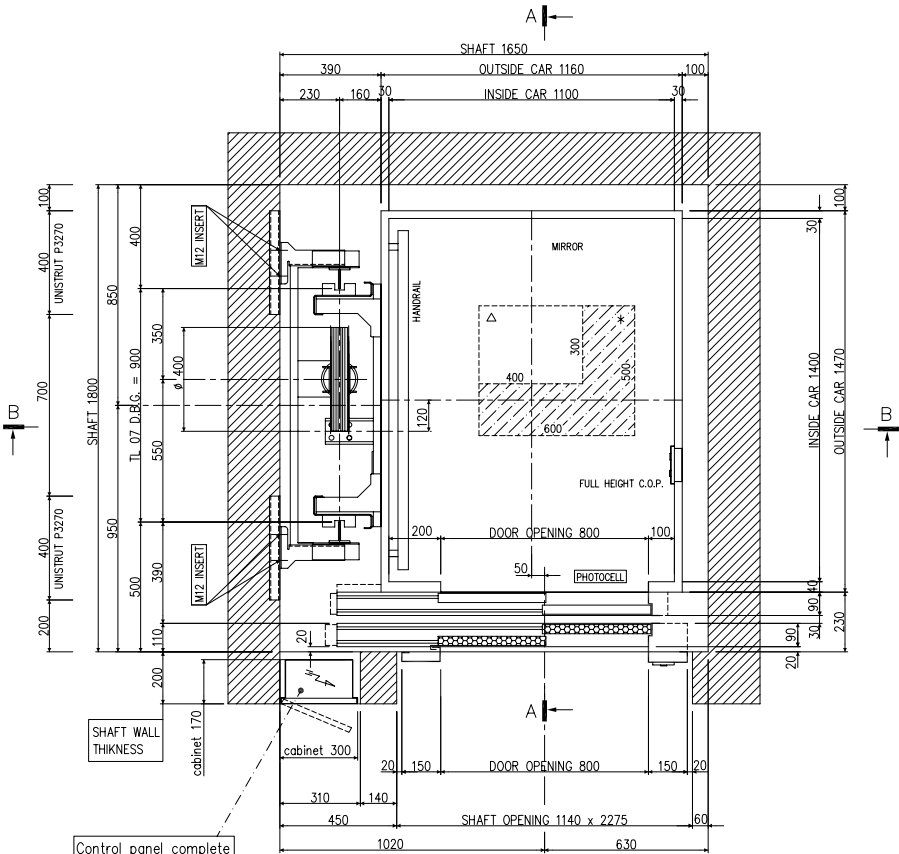
SCAFFOLDING DETAIL Sc.1/20



Control panel complete
with the door panel
Handpump and
Electrical Emergency

N° 2 SPRING
BUFFERS ø17mm

FIT THE PUMP UNIT IN THE PIT
BEFORE ERECTING SCAFFOLDINGS



PLAN VIEW – SC. 1/10

PUMP UNIT	TYPE "MRL-H"
TOTAL OIL	145 L
NOMINAL CURRENT	31,3 A
STARTING CURRENT	77 A

Rev.3 – date:14.04.08 / M.M.
travel was 13000mm
headroom was height 3400mm
floor names were: G,1,2,3,4
Rev.2 – date:22.02.08 / M.M.
door opening was 900mm
cabinet was wide 280mm
car handrail was on the rear wall
Rev.1 – date:14.12.07 / M.M.
door opening was 800mm

DATE 12.12.2007	FIRMA M. M.
REV. DATE	PLANT N.
3 14.04.2008	10074/3009

drawing 2/2